

Performance Exam

20/06/2011 Original draft

Overview

This document describes the steps necessary to complete our Performance Exam for your Power/i5/iSeries server. Note these steps have to be carried out by a user with *ALLOBJ authority. Note that we use Midrange Performance Group's Performance Navigator to prepare data for this service.

Establishing current status of IBM Collection Services

Our exam is based on key statistics trapped and recorded by IBM's Collection Services. You can check its current status with the following commands:

1. GO PERFORM
2. Take option 2, Collect performance data

You will see a screen similar to the following:

```
Session A - [24 x 80]
File Edit View Communication Actions Window Help
Collect Performance Data PCS3
20/06/11 12:39:39
Collection Services status:
Status . . . . . : Started
Collection object . . . . . : Q171000106
Library . . . . . : QPFRDATA
Started . . . . . : 20/06/11 00:01:07
Default collection interval . . : 00:15:00
Retention period . . . . . : 01 day 00 hours
Cycle time . . . . . : 00:01:00
Cycle interval . . . . . : 24
Collection profile . . . . . : *STANDARDP

Select one of the following:

1. Start Performance Collection
2. Configure Performance Collection
3. End Performance Collection

Selection or command
===>
F3=Exit F4=Prompt F5=Refresh F9=Retrieve F12=Cancel
MA a MW 21/007
I902 - Session successfully started RICOH Aficio SP C420DN RPCS on 192.168.0.8!
```

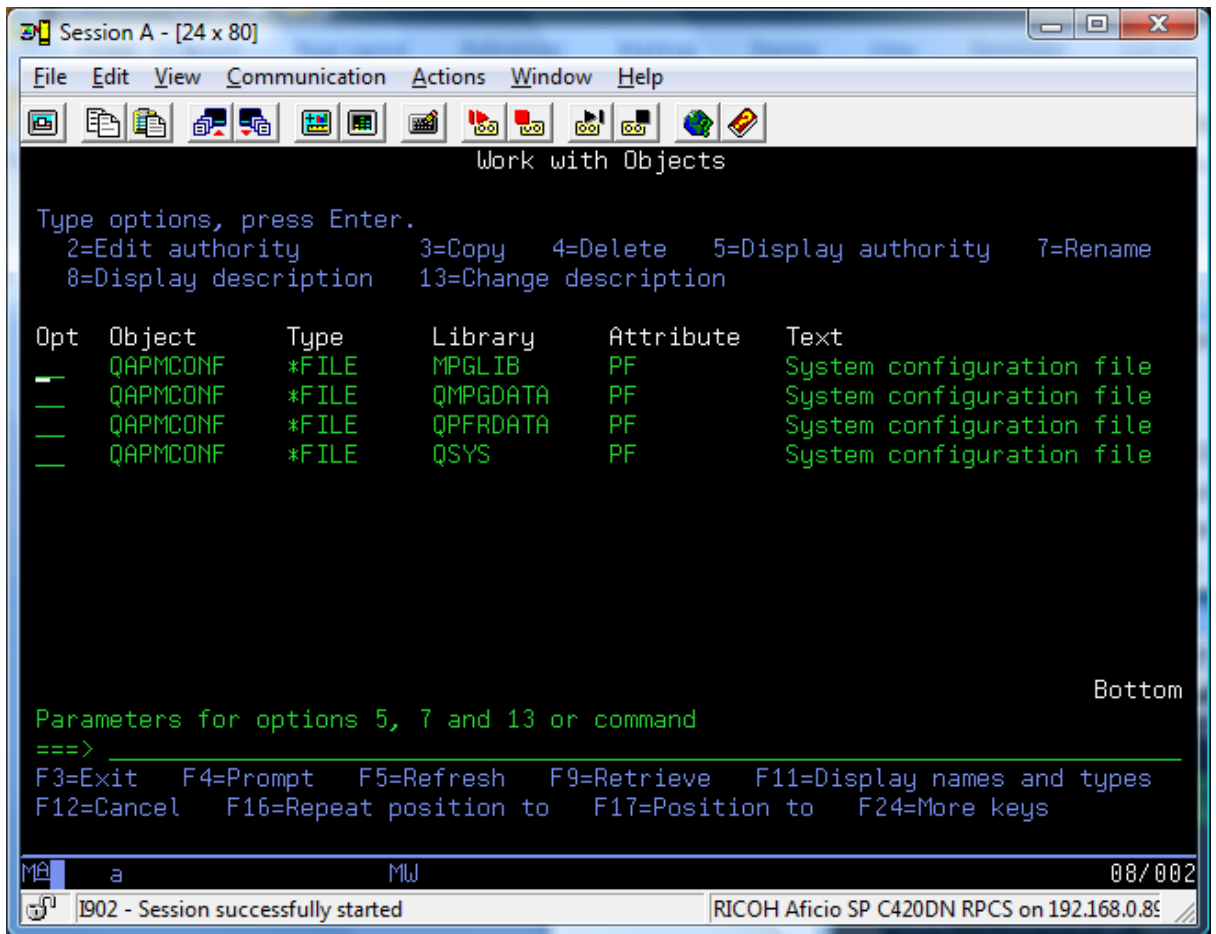
Status started = *Collection services is active*; if not active, our procedure below will activate Collection Services. Note that the overhead for this is negligible.

Collection object library = QPFRDATA in this example, but may be different in your case.

Make a note of the name you see for reference below.

3. WRKOBJ OBJ(*ALL/QAPMCONF) OBJTYPE(*FILE)

You will see a screen similar to below:

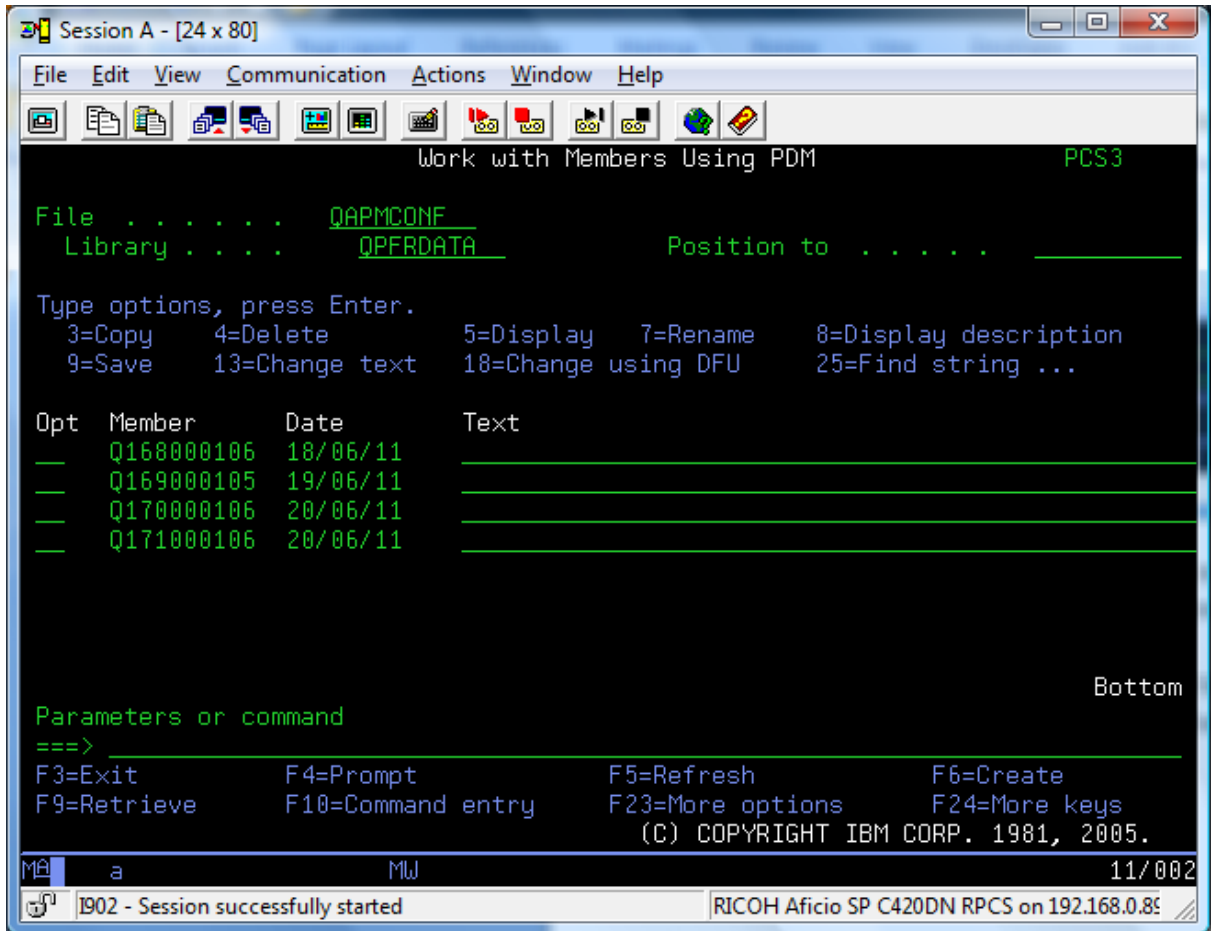


The entries for MPGLIB and QSYS libraries are normal and can be ignored. The other entries indicate libraries containing current or old Collection Services files. The list should include the Collection Object library name identified in the previous step. Make a note of the library names other than MPGLIB and QSYS required for the next step.

4. WRKMBRPDM xxxxxxxxxxx/QAPMCONF

where QAPMCONF = the name of a key Collection Services file and xxxxxxxxxxx = the collection object library name(s) noted in the previous step.

You will see a screen similar to this:



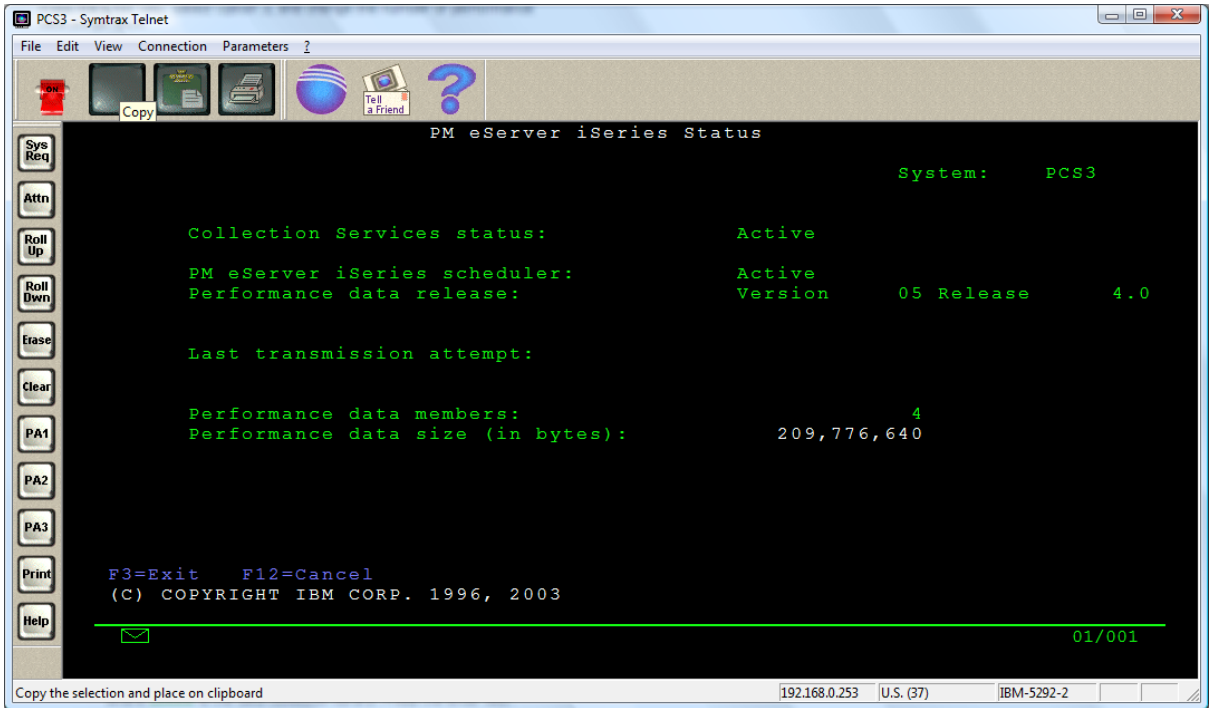
In this example there are four members for the current day and the previous three days. You may see more than four days and/or multiple members per day, which is generally OK. You need to identify the *performance data library* with the QAPMCONF file that has the most recent data. Data up to 12 months old is potentially useful.

Establish if IBM PM for I is active

IBM customers often find they are running the IBM version of PN400; known as PM400. You can check this by:

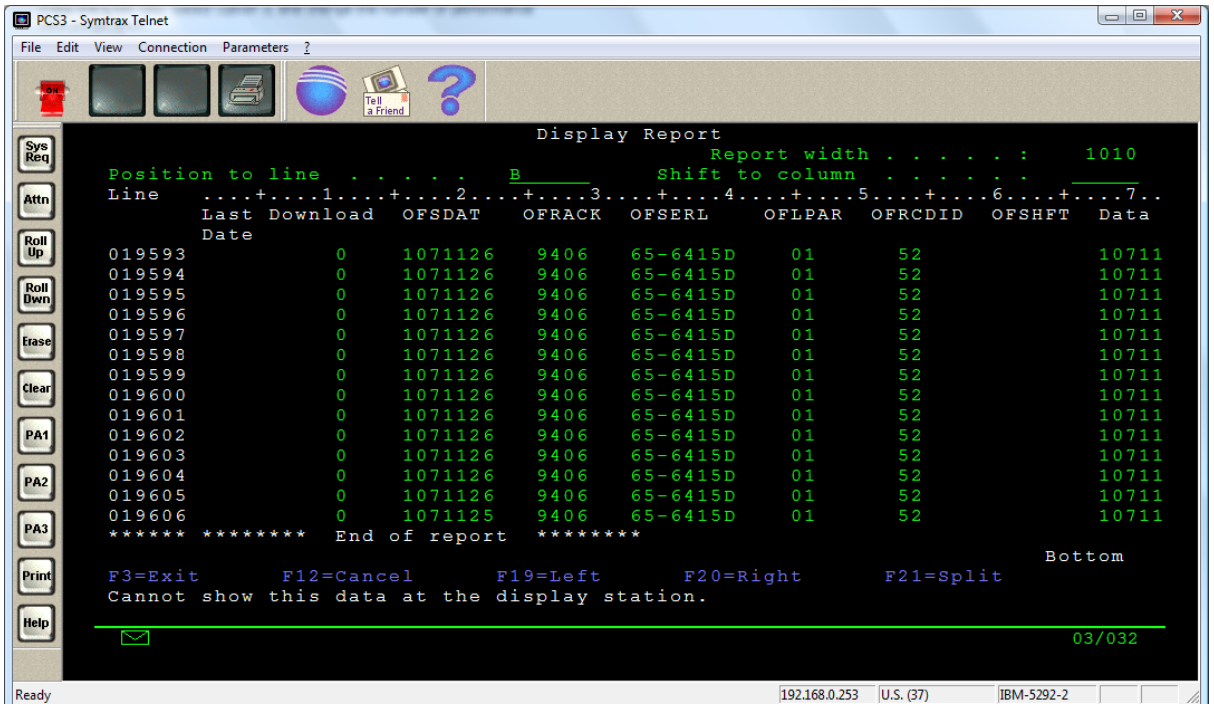
1. GO PM400
2. Option 6 - Display PM eServer iSeries status

You will see a screen similar to:



IF the Collection Services status is active, and the number of performance data members is more than zero, then it is likely you have reduced historical PM400 data we can use.

3. You can confirm this by:
 RUNQRY QRY(*NONE) QRYFILE((QA1PONEI5))
 Type 'B' and press enter
 You will see a screen similar to this:



The date in OFSDATA column indicates that the newest data in OFSDATE column is only November 26 2007 (CYMMDD format).

Download and install latest Performance Navigator client and PN400

1. Go to the MPG website at <http://www.mpginc.com/#> and click on the *Download latest Vxx* line. You will be prompted to download the Performance Navigator client and install it on your PC.
2. You will then be prompted to download and install the PN400 server engine. You will see the following prompt during this installation:

Config Performance Navigator (CFGPERFNAV)

Type choices, press Enter.

Performance data library	_____	Name
Purge performance data	_____	*YES, *NO
Purge days	_____	Number
Schedule data reduction job	*YES	*YES, *NO
Job queue	QSYSNOMAX	Name
Library	*LIBL	Name, *LIBL
Schedule performance monitor	_____	*YES, *NO
Schedule IFS size collection	*YES	*YES, *NO
Copy reduced data	_____	*NOW, *NEXTDR

Performance data library = name of library with most recent performance data identified above; QMPGDATA if no recent data is found.

Purge performance data = *NO if QAPMCONF file identified above has members for today and/or recent days; *YES if only old data is found in QAPMCONF file.

Schedule performance monitor = *NO if Collection Services active as determined above; *YES if Collection Services is inactive.

Copy reduced data = *NOW if PM400 and/or recent performance data found; else *NEXTDR.

3. You will be prompted to connect your Performance Navigator client to the PN400 server. This will not succeed immediately if you have just started Collection Services for the first time or are using a new library for performance data; you will need to wait at least 15 minutes.

Send reduced performance data to PCS for processing

Determine if you have at least 7 days worth of reduced data with:

1. ADDLIBLE MPGLIB
2. GO PERFNAV
3. Take option 7 = Performance Navigator status

You will see a screen similar to this:

The screenshot shows a Symtrax Telnet window titled 'PCS3 - Symtrax Telnet'. The window has a menu bar (File, Edit, View, Connection, Parameters) and a toolbar with icons for Sys Req, Attn, Roll Up, Roll Dwn, Erase, Clear, PA1, PA2, PA3, Print, and Help. The main display area is titled 'Status and Information' and shows the following text:

```
System: PCS3

Performance monitor status: Active
CRTPFRDTA status: Active

Performance data library: QPFRDATA
Performance data members: 4
Performance data release: Version 05 Release 4.0
Performance data date range: 17/06/11 20/06/11

Performance Navigator release: 15.0B

Last data reduction: 19/06/11 13:00:00
Reduced data range: 26/08/06 19/06/11
System name in reduced data: PCS3

Bottom

F3=Exit F6=Start Monitor F12=Cancel F8=View MPGSHF F9=WRKMBRPDM
(C) Copyright Midrange Performance Group, Inc. 1999

01/001
```

The status bar at the bottom of the window shows 'Ready', '192.168.0.253', 'U.S. (37)', and 'IBM-5292-2'.

Check that reduced data range covers at least the last 7 days. If you have completed the installation of PN400 week or more ago and the screen does not look similar to the above, contact us for further assistance.

4. Once you have established you have a sufficient range of reduced data dates, then you should launch your Performance Navigator client and use the SOS function to send the data to support@pickett.com.au. We will process your data as soon as we can.